

7027 G1-P-002

Rev	Date	By	Description	CHKD

**CPMG ARCHITECTS**  
 23 WAASER GATE NOTTINGHAM NG1 1NU  
 TEL: 0115 958 9500 FAX: 0115 958 9700  
 E-MAIL: nottingham@cpmg-architects.com  
 WEB SITE: www.cpmg-architects.com

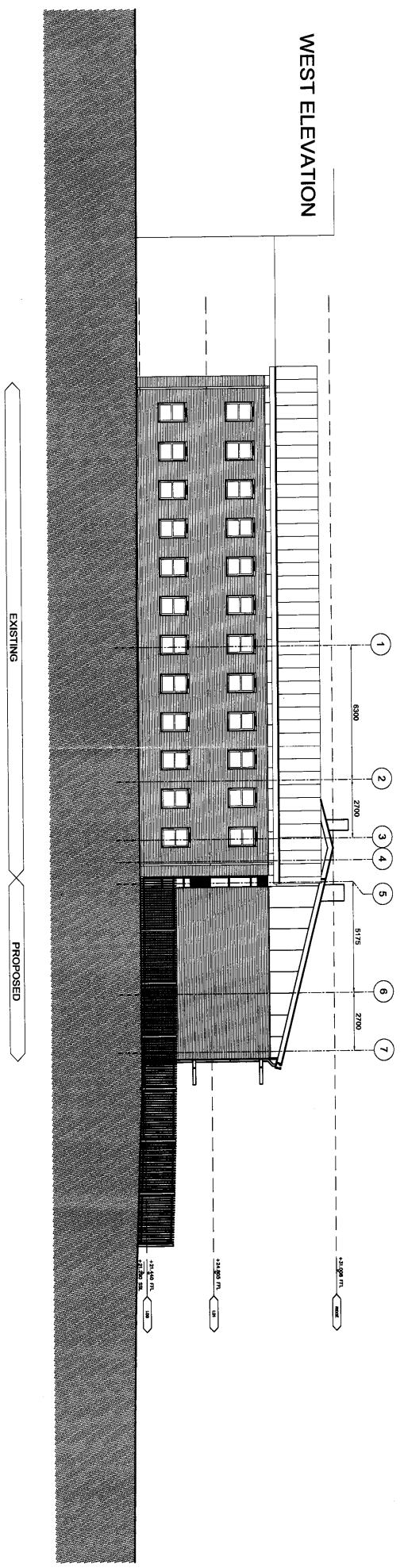
© Copyright of CPMG Architects Limited 2010.  
 All rights reserved. No part of this publication may be reproduced, stored in a retrieval system, or transmitted, in any form or by any means, without prior permission of CPMG Architects Limited.  
 Do not scale from drawings, use figured dimensions only.  
 All work to be checked on site.  
**BSI** REGISTERED MANAGEMENT SYSTEMS CERTIFICATE NO. 15 39008  
**ISO 9001:2004 ENVIRONMENTAL MANAGEMENT SYSTEMS CERTIFICATE NO. EMS 90117**

Job title		drawing status	
Stockton 6th Form College		PLANNING SUBMISSION	
drawing title	Proposed Site Layout Plan	drawn by	LC
		date	12.07.10
		job no.	7027
		drawing no.	CS3 G1-P-002
		checked by	PB
		scale	1:500
		revision	-
		medium	A1
Project: 13 July 2010 10:53:15			

10/1809

PLANNING SUBMISSION  
 09 JUL 2010  
 DATE RECEIVED

WEST ELEVATION



• C P M G •  
 A R C H I T E C T S

23 WARSER GATE NOTTINGHAM NG1 1NU  
 TEL. 0115 958 9500 FAX 0115 958 9700  
 E-MAIL : nottingham @ cpmg-architects.com  
 WEB SITE : www.cpmg-architects.com



© Copyright of CPMG Architects Limited 2010.  
 All rights reserved. No part of this publication may be reproduced, stored in any retrieval system or transmitted in any form or by any means, electronic, mechanical, photocopying, recording, or otherwise, without the prior written permission of CPMG Architects Limited.  
 Do not scale from drawing. Use figured dimensions only.  
 All dimensions to be checked on site.

ISO 9001:2008 QUALITY MANAGEMENT  
 CERTIFICATE NO. FS 24638  
 ISO 14001:2004 ENVIRONMENTAL MANAGEMENT  
 CERTIFICATE NO. EMS 93117

job title  
 Stockton 6th Form College Lab

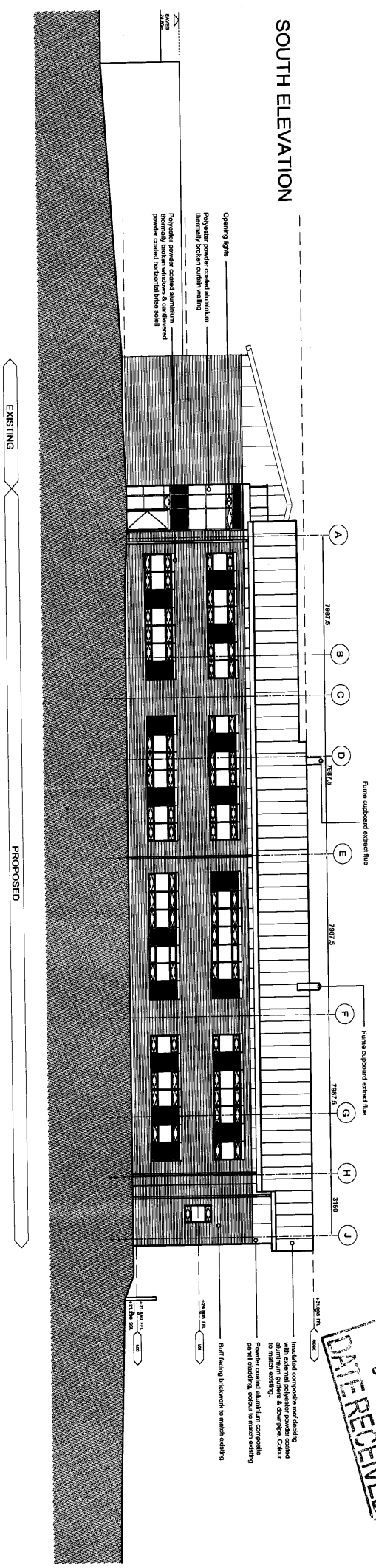
drawing title  
 West Elevation

PLANNING SUBMISSION

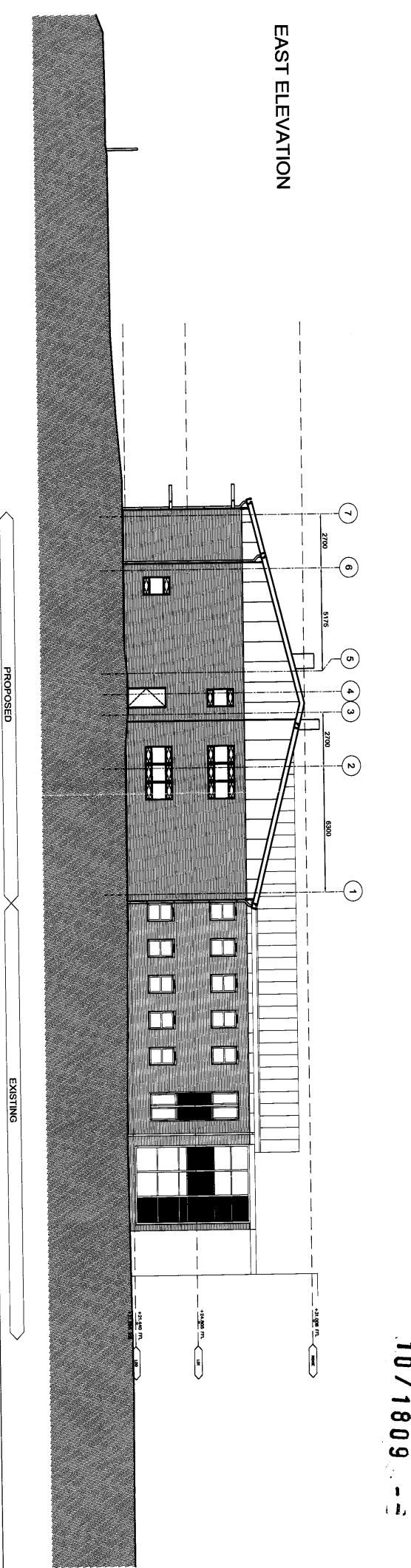
drawn by	date	checked by	scale
LC	05.07.10	PB	1:200
job no.	drawing no.	revision	media
7027	C63	G25-E-003	A3

DATE RECEIVED  
09 JUL 2010

**SOUTH ELEVATION**



**EAST ELEVATION**



10/1809

**• C P M G •**

A R C H I T E C T S

23 WARSER GATE NOTTINGHAM NG1 1NU  
TEL 0115 958 9500 FAX 0115 958 9700  
E-MAIL : nottingham@cpmg-architects.com  
WEB SITE : www.cpmg-architects.com

© Copyright of CPMG Architects Limited 2010.  
All rights reserved. No part of this publication may be reproduced, stored in any retrieval system or transmitted in any form or by any means without prior permission of CPMG Architects Limited.  
Do not scale from drawing, use figured dimensions only.  
All dimensions to be checked on site.  
BSI ISO 9001:2008 QUALITY MANAGEMENT  
CERTIFICATE NO. FS 30858  
ISO 14001:2004 ENVIRONMENTAL MANAGEMENT  
CERTIFICATE NO. EMS 53117

Stockton 6th Form College Lab

South & East Elevations

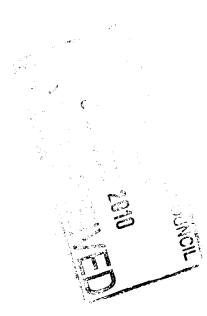
PLANNING SUBMISSION

B	06.07.10	LC	NG	Planning Submission - Specs modified to reflect plans, roof covering & rainwater pipe updates & curtain glazing openings added, door to south elevation added, graphic changes, ground level updated around perimeter
A	10.05.10	LC	PB	Rainwater pipes added, glazing modified, roadblock hatch added, graphic changes

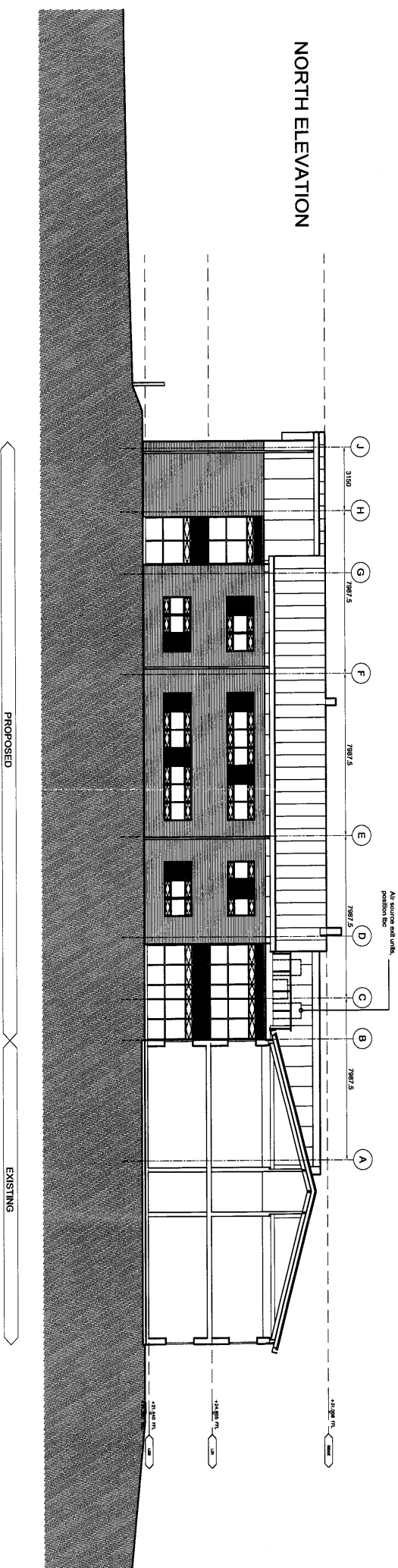
drawing title	Stockton 6th Form College Lab	drawing no.	7027	date	10.05.10	drawn by	LC	checked by	PB	scale	1:200
job title	Stockton 6th Form College Lab	job no.	083	revision	G25-E-001	checked by	B	media	A3		



10/1009



NORTH ELEVATION



All source and unit position file

• C P M G •  
A R C H I T E C T S

23 WARSER GATE NOTTINGHAM NG1 1NU  
TEL: 0115 958 9500 FAX: 0115 958 9700  
E-MAIL: nottingham@cpmg-architects.com  
WEB SITE: www.cpmg-architects.com

© Copyright of CPMG Architects Limited 2010.  
All rights reserved. No part of this publication may be reproduced, stored in any retrieval system or transmitted in any form or by any means without prior permission of CPMG Architects Limited.  
Do not scale from drawing, use figured dimensions only.  
All dimensions to be checked on site.

**BSI**  
ISO 9001:2008 QUALITY MANAGEMENT  
CERTIFICATE NO. FS 30636  
ISO 14001:2004 ENVIRONMENTAL MANAGEMENT  
CERTIFICATE NO. EMS 98117

rev.	date	by	description	chkd.
A	05.07.10	EC	Planning Submission - final & approved. updated ground level updated around perimeter, car park shading updated, millage added, graphic changes.	NG

J:\7027 Stockton 6th Form College Lab\00 BIM\Sheet\A-E-Elv\elvdraft\7027-023-025-E-002.dwg

job title  
Stockton 6th Form College Lab

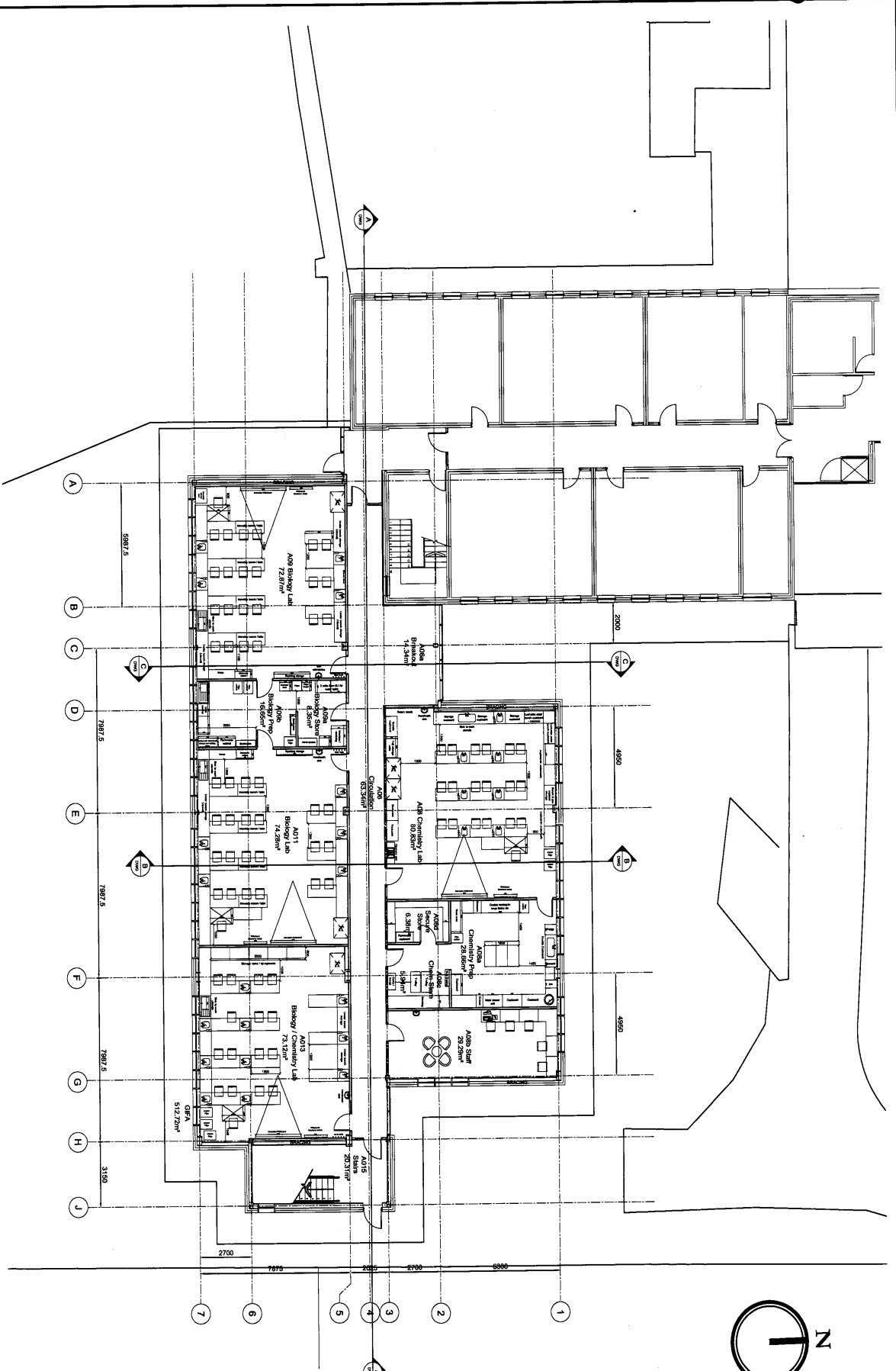
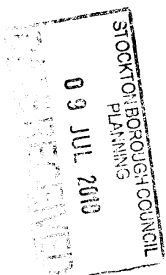
drawing status  
PLANNING SUBMISSION

drawing title	drawn by	date	chkd by	scale
North Elevation	LC	10.05.10	PB	1:200

job no.	drawing no.	revision	media
7027	G25-E-002	A	A3

Printed: 07 July 2010 15:58:38

10/1809



C	05.07.10	LC	Planning Submission - Curtain walling & staircase modified	NG
B	18.06.10	LC	Final CMA - A08 furniture removed, A09b Office & window removed, A09b window position altered	PB
A	15.06.10	LC	Structural grid updated & basic structural info individual room spaces modified as per clients instruction, frame cupboard zones modified, A013 door moved due to column position, A05/A06 slight reduction in size	PB

23 WARSER GATE NOTTINGHAM NG1 1NU  
 TEL 0115 958 9500 FAX 0115 958 9700  
 E-MAIL: nottingham@cpmg-architects.com  
 WEB SITE: www.cpmg-architects.com

# • C P M G •

## A R C H I T E C T S

© Copyright of CPMG Architects Limited 2010.  
 All rights reserved. No part of this document or its contents may be reproduced, stored in a retrieval system or transmitted in any form or by any means, without prior permission of CPMG Architects Limited.  
 Do not scale from drawing, use figured dimensions only.  
 All dimensions to be checked on site.

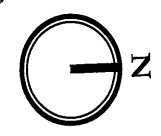
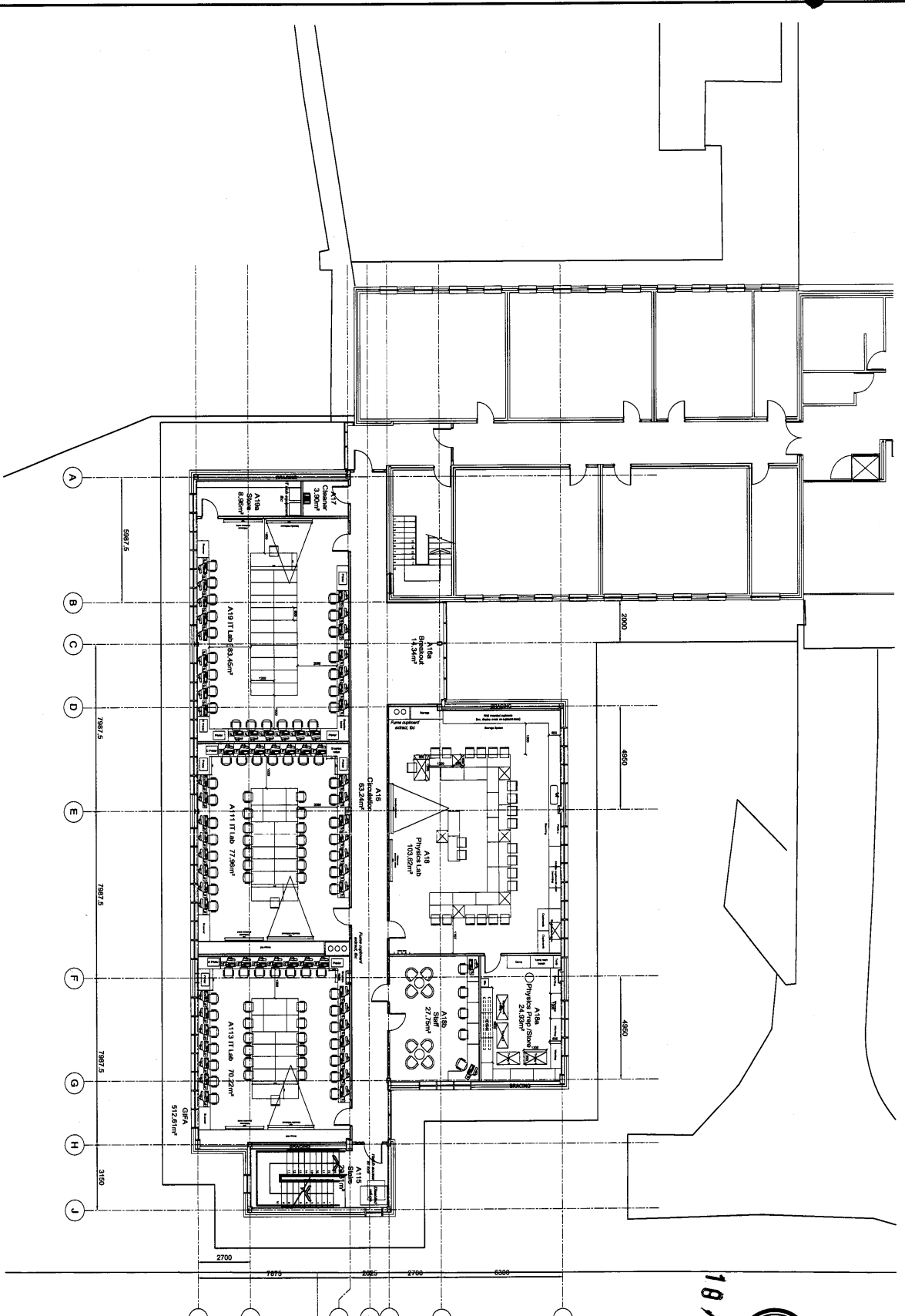
ISO 9001:2008 QUALITY MANAGEMENT  
 CERTIFICATE NO. FS 30086  
 ISO 14001:2004 ENVIRONMENTAL MANAGEMENT  
 CERTIFICATE NO. EMS 85117

Job title  
**Stockton 6th Form College Lab**

Drawing title  
**Ground Floor Plans & Furniture**

drawing status				PLANNING SUBMISSION			
drawn by	date	checked by	scale	drawn by	date	checked by	scale
LC	27.05.10	PB	1:200	LC	27.05.10	PB	1:200
job no.	drawing no.	revision	media	job no.	drawing no.	revision	media
7027	C63	G4-301	C	7027	C63	G4-301	C





18/1889

RECEIVED  
09 JUL 2010  
PLANNING  
COUNCIL

rev	date	by	description	chk'd
C	05.07.10	LC	Final Submission - Curtain walling & staircase updated	NG
B	18.06.10	LC	Post DTM - IT Hub removed & equipment moved to A17a, single window A17a removed, A17a window positions altered, A17a & A17c store removed, external staircase updated, A17c removed & layout changed as per client request	PB
A	15.06.10	LC	Structural grid updated & basic structural info added, individual room layouts modified as per client request, items submitted also modified	PB

• C P M G •  
A R C H I T E C T S

23 WARRESER GATE NOTTINGHAM NG1 1NU  
TEL 0115 958 9500 FAX 0115 958 9700  
E-MAIL : nottingham@cpmg-architects.com  
WEB SITE : www.cpmg-architects.com

© Copyright of CPMG Architects Limited 2010.  
All rights reserved. No part of this publication may be reproduced, stored in a retrieval system, or transmitted in any form or by any means, without the prior written permission of CPMG Architects Limited.  
Do not scale from drawing. Use figured dimensions only.  
All dimensions to be checked on site.

ISO 9001:2008 QUALITY MANAGEMENT  
CERTIFICATE NO. FS 26858

ISO 14001:2004 ENVIRONMENTAL MANAGEMENT  
CERTIFICATE NO. EMS 58317

Stockton 6th Form College Lab

First Floor Plans & Furniture

PLANNING SUBMISSION

drawn by	date	chk'd by	scale
LC	27.05.10	PB	1:200
job no.	drawing no.	revision	media
7027	C63	G4-302	A3



